

Poco Loco Bay Race - Sailing Instructions
Richmond County Yacht Club
September 26th, 2015

1 RULES

- 1.1** The Regatta will be governed by the Racing Rules of Sailing (RRS) 2013-2016, the prescriptions of US SAILING for all divisions, the rules of PHRF-MA for Spinnaker and Non-Spinnaker Divisions, and the rules of NEMA for Multihull Division. The regatta will also be governed by the Notice of Race (except as any of these are altered by these sailing instructions), and these Sailing Instructions. The Race Committee will have final authority on all matters.
- 1.2** Any questions in regard to these Sailing Instructions must be submitted in writing. The question and any answer will be posted on the Official Regatta Notice Board.

2 ENTRY

All boats must have completed registration and paid all fees with the regatta organizing authority before becoming official competitors. All competitors must be members of PHRF-MA for the Spinnaker and Non-Spinnaker Divisions and members of NEMA for the Multihull Division.

3 NOTICES TO COMPETITORS

Notices to competitors will be posted on the Official Regatta Notice Board located on the on the first floor of the yacht club.

4 CHANGES IN SAILING INSTRUCTIONS

Any change in the sailing instructions after the skippers meeting will be approved by the Race Committee and posted before 1100 hours that day. Changes to the sailing instructions and any Notices posted will be announced on VHF Channel 71 at the Harbor Start and prior to the first warning signal of the race.

5 SIGNALS MADE ASHORE

- 5.1** Signals made ashore will be displayed on the designated official flagstaff located on the yacht club property.
- 5.2** The Answering Pennant, "AP", may be displayed. When "AP" is displayed ashore the time of the warning signal will be posted on the Notice Board before the lowering of the "AP".

Poco Loco Bay Race - Sailing Instructions
Richmond County Yacht Club
September 26th, 2015

6 SCHEDULE

Saturday	September 26 th , 2015
Check-in	0900
Skippers Meeting	1000
Harbor Start	1100
First Start	1200
Post-Race Party	1800 or immediately following the race

7 THE COURSES

Division A (Spinnaker) and Division M (Multihull):

Start: See Section 10

First Mark: West Bank Lighthouse (To Port)

Second Mark: R"2"QR (To Port)

Third Mark: West Bank Lighthouse (To Starboard)

Finish: Vicinity of Old Orchard Lighthouse Island

Approximate Length: 16.04 nm

Division B and Division C (Working Sails Only):

Start: See Section 10

First Mark: West Bank Lighthouse (To Port)

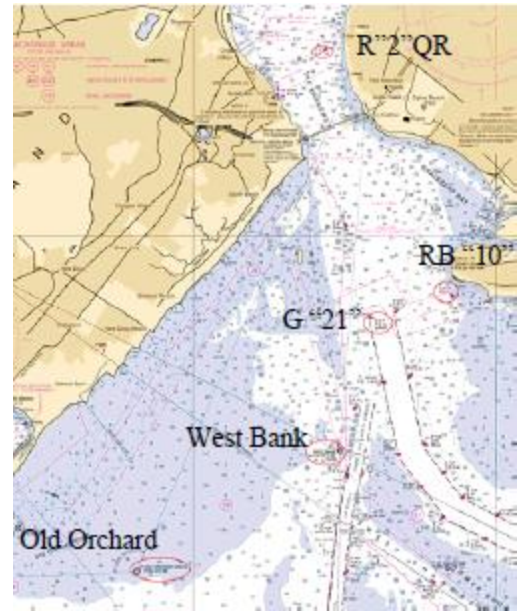
Second Mark: RB"10" Norton Point (To Port)

Third Mark: G "21" Ambrose Channel (to Port)

Fourth Mark: West Bank Lighthouse (To Starboard)

Finish: Vicinity of Old Orchard Lighthouse Island

Approximate Length: 11.12 nm



8 MARKS

Marks of the course shall be government buoys as depicted in Section 7.

9 START LINE CHECK IN


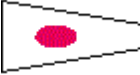
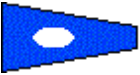
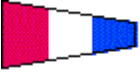
Before the first warning signal each boat shall sail past the stern of the Race Committee boat and hail her sail number until acknowledged by the Race Committee. A boat failing to do so will receive a Scoring Penalty calculated in accordance with RRS 44.3(c).

Poco Loco Bay Race - Sailing Instructions
Richmond County Yacht Club
September 26th, 2015

10 THE START

10.1 The starting line will be between a staff displaying an orange flag on the Race Committee boat at the starboard end and an orange buoy at the port end. The starting line will be in the vicinity of the Old Orchard Lighthouse Island.

10.2 Races will be started utilizing RRS 26. Division M will utilize the International Code Flag “4” as its Class Flag. Division A will utilize the International Code Flag “1” as its Class Flag. Division B will utilize the International Code Flag “2” as its Class Flag. Division C will utilize the International Code Flag “3” as its Class Flag.

Description	Signal	Time to Class Start				
		M Division:	A Division:	B Division:	C Division:	
	4 Warning Signal Div M:	Flag “4” Up	5:00 Min	10:00 Min	15:00 Min	20:00 Min
	Preparatory Signal Div M	Flag “P” Up	4:00 Min	9:00 Min	14:00 Min	19:00 Min
	One Minute Signal Div M	Flag “P” Down	1:00 Min	6:00 Min	11:00 Min	16:00 Min
	1 Start Signal Div M & Warning Signal Div A	Flag “4” Down Flag “1” Up	Start Div M	5:00 Min	10:00 Min	15:00 Min
	Preparatory Signal Div A	Flag “P” Up		4:00 Min	9:00 Min	14:00 Min
	One Minute Signal Div A	Flag “P” Down		1:00 Min	6:00 Min	11:00 Min
	2 Start Signal Div A & Warning Signal Div B	Flag “1” Down Flag “2” Up		Start Div A	5:00 Min	10:00 Min
	Preparatory Signal Div B	Flag “P” Up			4:00 Min	9:00 Min
	One Minute Signal Div B	Flag “P” Down			1:00 Min	6:00 Min
	3 Start Signal Div B & Warning Signal Div C	Flag “2” Down Flag “3” Up			Start Div B	5:00 Min
	Preparatory Signal Div C	Flag “P” Up				4:00 Min
	One Minute Signal Div C	Flag “P” Down				1:00 Min
	Start Signal Div C	Flag “3” Down				

10.3 A boat shall start no later than 10 minutes after her starting signal.

11 RECALLS

Individual recalls will be signaled in accordance with RRS 29.1. In addition, the Race Committee will attempt to broadcast promptly the sail number of each recalled boat on VHF channel 71. The following shall not be grounds for redress:

- A) Failure of a boat to receive the recall broadcast
- B) Failure of the Race Committee to broadcast recall numbers
- C) A boat’s position in the sequence of broadcast numbers.

Poco Loco Bay Race - Sailing Instructions
Richmond County Yacht Club
September 26th, 2015

12 THE FINISH

The finishing line will be between a staff displaying an orange flag on the Race Committee boat and an orange buoy. The finish Line will be in the vicinity of Old Orchard Lighthouse Island unless the course is shortened to another mark of the course.

13 TIME LIMIT

There shall be a 6 hour time limit for the race, i.e. all boats must finish within 6 hours of their start time.

14 SAFETY

All boats shall carry the safety equipment required by National, State, US Coast Guard and Class Association rules. All boats should carry these Sailing Instructions

A boat that retires from a race prior to finishing shall notify the Race Committee either before leaving the course area or immediately after arriving ashore.

Competitors are reminded that Raritan Bay and New York Bay contain restricted channels and all sailing vessels must comply with COLREGS.

Failure to comply with Safety requirements may result in a penalty, possibly even disqualification from the regatta.

15 SCORING

The Low Point Scoring System, RRS Appendix A4 will be used.

PHRF corrected times will be calculated using Time on Distance (ToD).

16 PENALTIES

16.1 RRS 44.1 and 44.2 will apply

16.2 A yacht taking a 720 degree turns penalty shall notify the race committee of such upon completion of the race.

17 PROTESTS

17.1 The protesting boat shall conspicuously display a red flag, in accordance with RRS 61.1.

Poco Loco Bay Race - Sailing Instructions
Richmond County Yacht Club
September 26th, 2015

- 17.2** Protests shall be written on US SAILING forms available from the race committee and lodged with the Race Committee's representative within the Protest Time which will begin at the time of the docking of the Race Committee signal boat and end one hour later. Docking time will be posted on the Official Regatta Notice Board.
- 17.3** The Race Committee will hear protests in approximately the order of receipt.

18 RADIO EQUIPMENT

All boats shall carry a VHF radio capable of transmitting and receiving radio transmissions and all boats shall monitor VHF Channel 71.

A boat shall neither make radio transmissions while racing, nor receive a special radio communication not available to all boats.

19 PRIZES

Prizes will be awarded to yachts placing first through third in each sub division. Subdivision breakdown will be determined by the number of entries in the division. The Spinnaker and Non-Spinnaker will also get NJYRA Championship awards.